

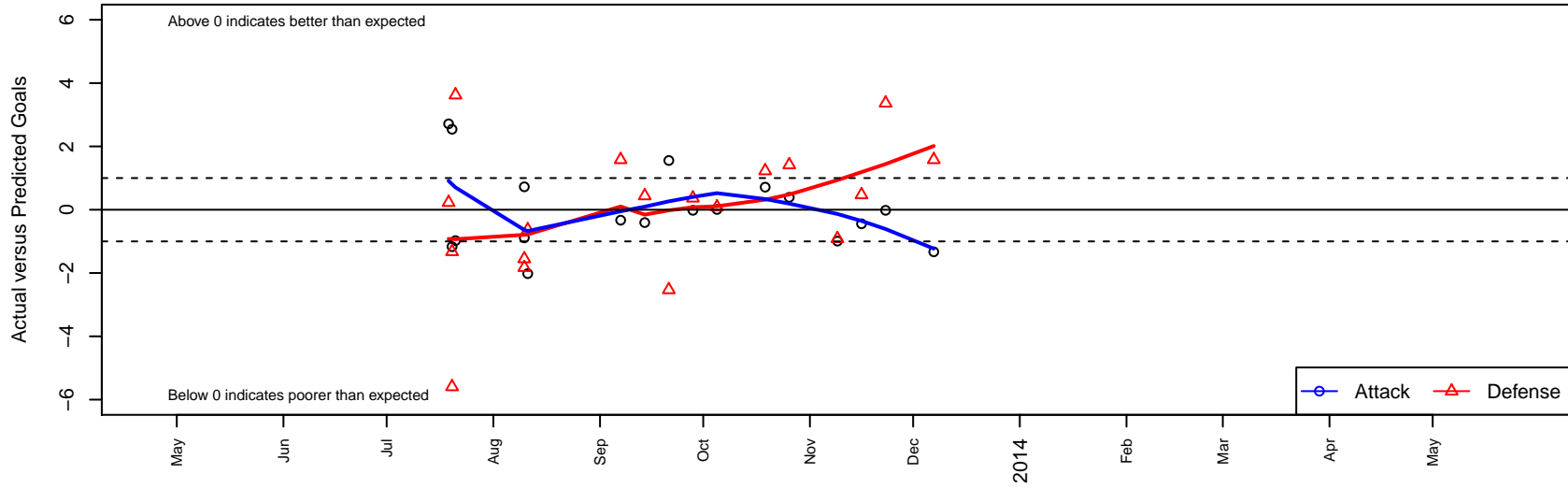
# UPSC Rave Blue G02

University Place SC  
 University Place, WA  
 G02 total strength=5  
 attack=0.09 defense=0.05  
 fall league = DIII G11D1  
 alt names used:  
 UPSC Rave – Blue  
 UPSC Rave Blue

Venues played:  
 KITG GU11 Red  
 River Jam Samba U11  
 DIII G11D1



**UPSC Rave Blue G02**  
 Dots are actual minus expected GF (blue circles) and GA (red triangles).  
 Blue line is smoothed change in attack strength. Red is smoothed change in defense strength.



	<b>date</b>	<b>home</b>		<b>away</b>		<b>venue</b>	<b>pred.home</b>	<b>pred.away</b>
3007	2013-12-07	UPSC Rave Blue G02	0	FME Fusion G02	0	DIII G11D1	1.33	1.58
2865	2013-11-23	UPSC Rave Blue G02	3	SK United G02	0	DIII G11D1	3.02	3.37
2769	2013-11-16	SGESC Fusion Red G02	1	UPSC Rave Blue G02	2	DIII G11D1	1.47	2.45
2652	2013-11-09	SCORE Patriots Blue G02	2	UPSC Rave Blue G02	3	DIII G11D1	1.09	3.99
2366	2013-10-26	Kent United White G02	1	UPSC Rave Blue G02	2	DIII G11D1	2.42	1.61
2217	2013-10-19	TC United Wirth G02	1	UPSC Rave Blue G02	2	DIII G11D1	2.23	1.29
1853	2013-10-05	UPSC Rave Blue G02	4	SCORE Patriots Blue G02	1	DIII G11D1	3.99	1.09
1705	2013-09-28	SK United G02	3	UPSC Rave Blue G02	3	DIII G11D1	3.37	3.02
1540	2013-09-21	UPSC Rave Blue G02	4	SGESC Fusion Red G02	4	DIII G11D1	2.45	1.47
1374	2013-09-14	UPSC Rave Blue G02	4	SGESC Fusion Blue G02	0	DIII G11D1	4.41	0.44
1207	2013-09-07	FME Fusion G02	0	UPSC Rave Blue G02	1	DIII G11D1	1.58	1.33
851	2013-08-11	UPSC Rave Blue G02	1	SK United G02	4	River Jam Samba U11	3.02	3.37
813	2013-08-10	Highline Select G02	5	UPSC Rave Blue G02	2	River Jam Samba U11	3.45	1.28
818	2013-08-10	UPSC Rave Blue G02	0	FC Crush MMII G02	5	River Jam Samba U11	0.89	3.17
469	2013-07-21	Pacific FC Blue G03	6	UPSC Rave Blue G02	0	KITG GU11 Red	9.62	0.98
414	2013-07-20	UPSC Rave Blue G02	0	West Narrows FC Blue G02	11	KITG GU11 Red	1.17	5.41
417	2013-07-20	UPSC Rave Blue G02	4	Fusion FC G02	4	KITG GU11 Red	1.46	2.67
375	2013-07-19	TC United Wirth G02	2	UPSC Rave Blue G02	4	KITG GU11 Red	2.23	1.29